

Range **Nexus**[™]



REDUCER COUPLING

Ø 20 - 16 Ø 25 - 20
Ø 25 - 16 Ø 32 - 25



COUPLING

Ø 16 - 16 Ø 25 - 25
Ø 20 - 20 Ø 32 - 32



CONNECTION WITH MALE THREAD

Ø 16 - 1/2" Ø 20 - 1/2"
Ø 20 - 3/4" Ø 25 - 3/4"
Ø 32 - 1"



CONNECTION WITH SWIVEL FEMALE THREAD

Ø 16 - 1/2" Ø 25 - 3/4"
Ø 20 - 1/2" Ø 25 - 1"
Ø 20 - 3/4" Ø 32 - 1"



ELBOW 90°

Ø 16 - 16 Ø 25 - 25
Ø 20 - 20 Ø 32 - 32



CONNECTION WITH FEMALE THREAD

Brass thread

Ø 16 - 1/2" Ø 20 - 3/4"
Ø 20 - 1/2" Ø 25 - 3/4"



ELBOW WITH FEMALE THREAD

Brass thread
Ø 16 - 1/2" Ø 20 - 3/4"
Ø 20 - 1/2" Ø 25 - 3/4"



ELBOW WITH MALE THREAD

Brass thread

Ø 16 - 1/2" Ø 25 - 3/4"
Ø 20 - 1/2"



ELBOW WITH SWIVEL FEMALE THREAD

Ø 16 - 1/2" Ø 25 - 1"
Ø 20 - 1/2"



WALL PLATE ELBOW

Brass thread

Ø 16 - 1/2"
Ø 20 - 1/2"



TEE REDUCER

Ø 16 - 20 - 16
Ø 20 - 16 - 16
Ø 20 - 16 - 20
Ø 20 - 20 - 16
Ø 25 - 16 - 25
Ø 25 - 20 - 20
Ø 25 - 20 - 25
Ø 25 - 25 - 20
Ø 32 - 25 - 25



TEE

Ø 16 - 16 - 16
Ø 20 - 20 - 20
Ø 25 - 25 - 25
Ø 32 - 32 - 32



TEE WITH FEMALE THREAD

Brass thread

Ø 16 - 1/2" - 16
Ø 20 - 1/2" - 20



TEE WITH SWIVEL FEMALE THREAD

Ø 16 - 1/2" - 16
Ø 16 - 3/4" - 16
Ø 20 - 1/2" - 20
Ø 20 - 3/4" - 20
Ø 25 - 1/2" - 25
Ø 25 - 3/4" - 25
Ø 25 - 1" - 25



ELBOW CONNECTION FOR RADIATOR

Ø 16 Cu15 - 300
Ø 16 Cu15 - 750



TEE CONNECTION FOR RADIATOR

Ø 16 Cu15 16 - 300
Ø 20 Cu15 20 - 300
Ø 20 Cu15 16 - 300
Ø 25 Cu15 25 - 300
Ø 16 Cu15 16 - 750
Ø 20 Cu15 20 - 750
Ø 20 Cu15 16 - 750
Ø 25 Cu15 25 - 750



BEVELLING TOOL

Ø 16 - 20 - 25
Ø 32



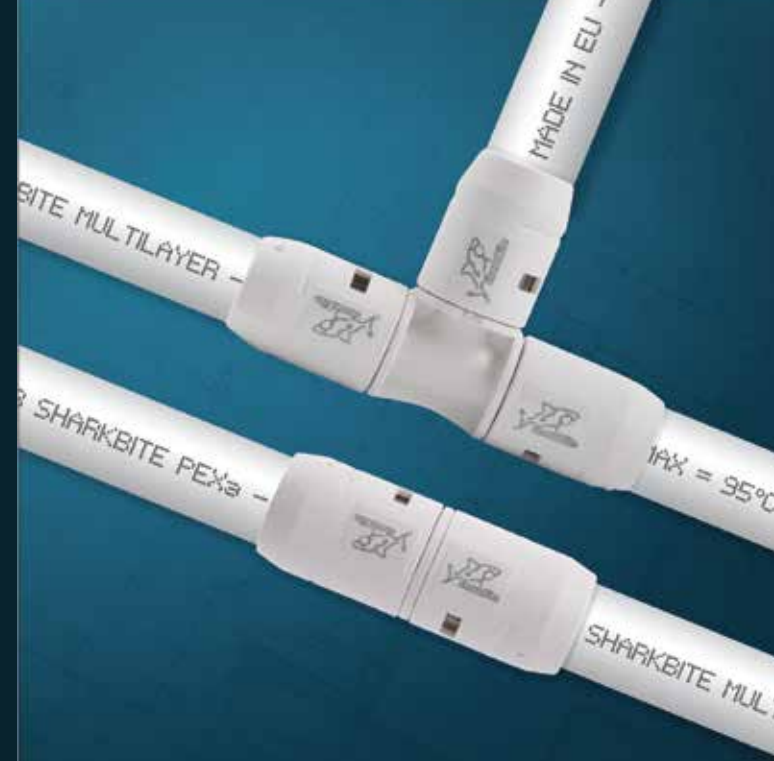
PIPE CUTTER

Ø 16 - 20 - 25 - 32



RELIANCE WORLDWIDE CORPORATION EUROPE - SPAIN

www.rwc.com
www.sharkbite.com
www.cashacme.com



PLUMBING & HEATING

Installation, Quick and Easy
Compatible with PEX and MULTILAYER pipes
Available in Ø 16, 20, 25 and 32 mm
More than 30 years of experience in Push Fit systems

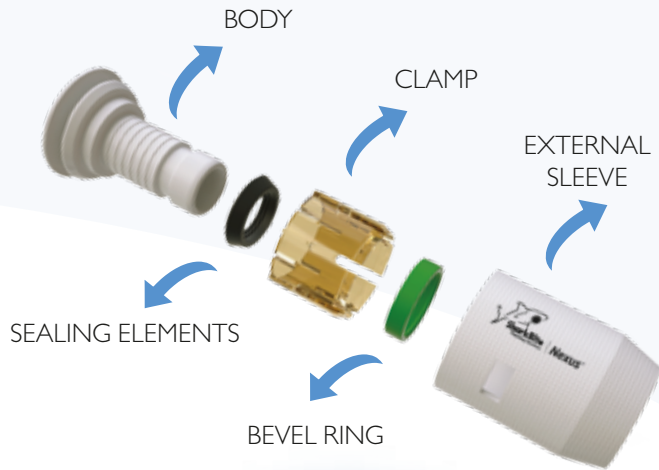


REALIANCE WORLDWIDE CORPORATION EUROPE - Spain
Autovia A-92, Km. 209, 18370 Moraleda de Zafayona,
Granada, Spain / + 34 958 49 70 70
www.rwc.com / www.sharkbite.com

NEXUS is a system of installation for plumbing and heating. No tools needed.

50% reduction of the fittings stock needed compared to traditional systems, since SharkBite system is compatible with PEX, PERT and Multilayer pipes alike.

NEXUS fittings made of polyphenylsulfone (PPSU)



PATENTED SYSTEM

EP 2 397 741 A I
WO 2010/092213
U 200900267
I 069 660

ASSEMBLY INSTRUCTIONS

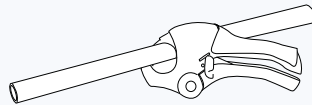


Cut

Step 1

Cut easily the desired pipe length by making a square (90°).

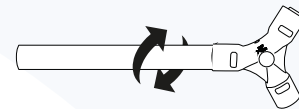
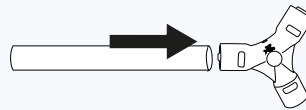
A proper cutting is needed in order to facilitate the correct bevelling.



Bevel and Calibrate

Step 2

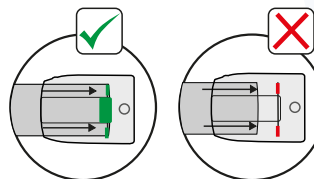
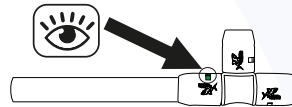
Bevel, and calibrate the pipe. Make sure that the pipe end has been bevelled both inner and outer layer all the edge long.



Insert

Step 3

Insert the bevelled pipe end into the fitting until it stops and visually check the GREEN ring through the inspection window to ensure that the pipe is fully home.



Minimum effort is required since all fittings contain silicone grease to make insertion easier.

NEXUS is COMPATIBLE with our SharkBite PEXa pipe, in diameters:

- ø 16 x 1,8
- ø 16 x 2,0
- ø 20 x 1,9
- ø 20 x 2,0
- ø 25 x 2,3
- ø 32 x 2,9



NEXUS is COMPATIBLE with our SharkBite MULTILAYER pipe, in diameters:

- ø 16 x 2,0
- ø 20 x 2,0
- ø 25 x 2,5
- ø 32 x 3,0



NEXUS is COMPATIBLE with our SharkBite PEXa EVOH 5 pipe (5 layer), in diameters:

- ø 16 x 2,0
- ø 20 x 2,0
- ø 25 x 2,3
- ø 32 x 2,9



* NEXUS is **-NOT COMPATIBLE-** with our SharkBite PEXa EVOH pipe (3 layer), in diameters:

Manufacturers and Distributors of:



Nexus™

